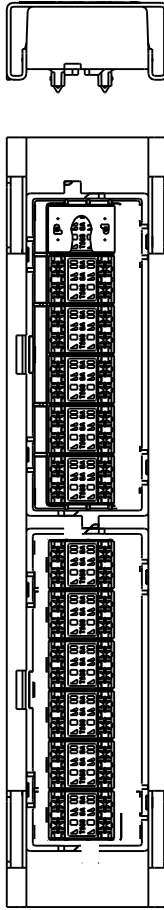


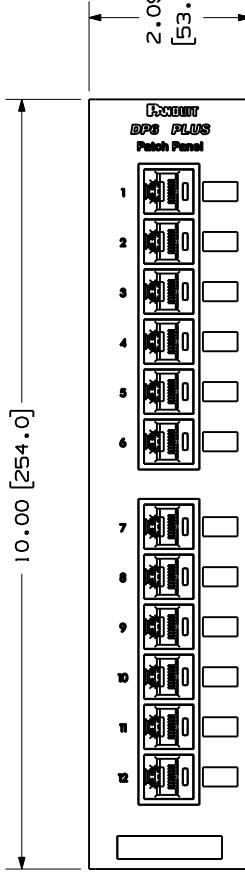
THIS COPY IS PROVIDED ON A RESTRICTED BASIS AND IS NOT TO BE USED IN ANY WAY DETRIMENTAL TO THE INTERESTS OF PANDUIT CORP.

PANDUIT PART NO.	WEIGHT (APPROX.)
DP12688TGY	1.25 lb (567 g)

- NOTES:
- SEE CURRENT CATALOG FOR VARIOUS APPLICATIONS AS WELL AS OPTIONAL ICONS.
 - MATERIAL: STEEL/BLACK POWDER COAT PANEL HOUSING; THERMOPLASTIC RESIN RJ45 MODULE; THERMOPLASTIC RESIN UL94V-0 PUNCHDOWN BLOCKS; THERMOPLASTIC BEZEL ASSEMBLY: UL94H-B RETENTION CAP: THERMOPLASTIC RESIN UL94V-0
 - 12 PORT PATCH PANEL WITH TWO 6 POSITION BEZELS ASSEMBLIES, 8 WIRES PER JACK ASSEMBLY.
 - THE PATCH PANEL IS DESIGNED TO SNAP INTO A STANDARD 589D WALL MOUNT BRACKET.
 - DIMENSIONS IN PARENTHESES ARE IN METRIC.
 - USE 110 STYLE TERMINATION TOOL FOR PUNCH DOWN.
 - RETENTION CAPS (ONE PER CONNECTOR) PROVIDED FOR SNAP-IN ON TERMINATED CONNECTORS.



RETENTION CAP SNAPS ONTO CONNECTOR
ONE CAP PER CONNECTOR



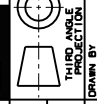
MODEL FILENAME	MO208BAG_12_PORT_03	SIZE	A
DRAWING FILENAME	MO2479MM_DC326_00A.PRT		

TITLE
DP6 PLUS 12 PORT PATCH PANEL CUSTOMER DRAWING



PANDUIT™
TINLEY PARK, IL 60477

ALL DIMENSIONS ARE GIVEN IN INCHES, UNLESS OTHERWISE SPECIFIED.
DIMENSIONAL TOLERANCES ARE:
(.XX) ± .03 (XXX) ± .005
(.XX) ± .01 ANGLES ± .1°



REVIEW	DATE	BY	CHK'D	DESCRIPTION
R	3-21-06	NER		RELEASED TO PRODUCTION

DRAWN BY	NER
DATE	3-21-06
CHK'D	

REV	DATE	BY	CHK	DESCRIPTION	ECN	R	CUST	SUP	OTH

PART NO.	DP12688TGY
DRAWING NO.	02479-326

WORK INSTRUCTION
SCALE .25:1